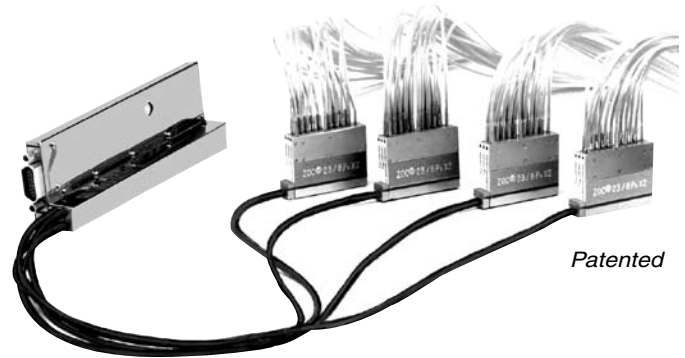




Features

- 0 - 50 psid pressure range
- Field replaceable pressure sensors
- Patented microvalves make this miniature module possible(0.3 cu. in.)
- 20kHz scan rate
- Duplex 64 pressure inputs with 32 pressure sensors
- On board sensor excitation regulator



*ZOC23B/32Px
Pressure Scanner*

General Description

The Model ZOC23B is similar to Scanivalve's model ZOC22B electronic pressure scanner. The pressure sensor and calibrator microvalves package has been divided into 4 remote modules, each containing 8 pressure sensors which may be duplexed* to read 16Px (pressure inputs). The 4 remote pressure sensor modules are on umbilicals which connect into the amplifier multiplexer unit. Each module has its own reference pressure, calibration tubulations, and calibration valving. This allows the remote pressure sensor modules to be multi-ranged.

An integral "duplexing" valve is available to allow the ZOC23B's 32 sensors to service up to 64 input pressures. The integral calibration valve has four modes of operation: operate, calibrate, purge, and leak test; each activated by applying the appropriate pneumatic control pressure. This calibration valve allows the ZOC sensors to be automatically calibrated while on-line.

Three versions are available:

ZOC23B/32Px - 32 Px inputs each with its own dedicated sensors

ZOC23B/32PxX2 - 64 Px inputs duplexed* between 32 sensors.

ZOC23B/32Px - Valveless (No calibration valve)

Applications

The ZOC23B electronic pressure scanner is specifically designed for space-constrained use, such as inside very small supersonic wind tunnel models. The remote pressure sensor modules can be mounted in any position to fit where no other pressure scanners can be used. They can be used inside flaps and control surfaces of flight test airplanes, where it is important to measure high frequency turbulent flow. The small size makes it possible to locate the remote modules very close to the pressure orifices to maximize frequency response. This is the same reason that makes the ZOC23B useful in oscillating model research. When the ZOC23B is used for flight test it must be installed in a thermostatically controlled heater jacket.

The ZOC23B module is designed to be used with Scanivalve's Module Address Control Unit (MACU2) which generates address signals for ZOC23 operation. It can also be used with a customer's "in-house" data system or contact Scanivalve for use with RAD3200 Remote A/D or DSM3400 Digital Service Module.

*Duplexing shares 2Px inputs with one pressure sensor. This doubles the usefulness of a ZOC22B module without increasing the cost or the space needed for module installation.

Px = Pressure Input

Specifications

Inputs (Px): 64 or 32 .042 inch (1.067mm) O.D. tubulations

Full Scale Ranges: ±10, 20 inch H₂O, 1, 2.5, 5, 15, 50 psid (±2.5, 5, 7, 17, 35, 100, 350 kPa)

Accuracy:¹
 10 inch H₂O † ±0.15% F.S.
 20 inch H₂O † ±0.12% F.S.
 1 to 2.5 psid ±0.1% F.S.
 5 to 50 psid ±0.08% F.S.

Sensor Addressing: 5 bit binary, CMOS level

Full Scale Output: Standard: ±2.5Vdc
Optional: ±5Vdc, ±10Vdc

Resolution: Infinite

Scan Rate: 20kHz

Temperature: 0° to 60°C

Temperature Sensitivity:

Range	Zero	Span
10 inch H ₂ O	0.25% FS/°C	0.1% FS/°C
20 inch H ₂ O	0.20% FS/°C	0.1% FS/°C
1 to 50 psid	0.10% FS/°C	0.1% FS/°C

Connector Type: Cannon 15 pin MDM 15SL2P

Power

Requirements: ± 15Vdc @ 45mA

Overpressure

Capability: 10 inch H₂O, 20 inch H₂O, 1 psid = 10 psi (70kPa)
(With no damage)
2.5-50 psid = 400% or 75 psi (517kPa) (whichever is less)

Maximum

Reference Pressure: 50 psig (345kPa)

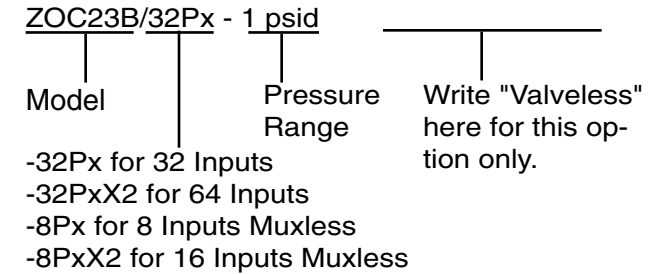
Media

Compatibility: Gases compatible with silicon, silicone, aluminum, and Buna-N

Weight:

ZOC23B/32Px: 6.00 ozs. (170 gm)
ZOC23B/32PxX2: 6.13 ozs. (174 gm)
ZOC23B/8Px muxless: .93 ozs. (27 gm)

Ordering Information

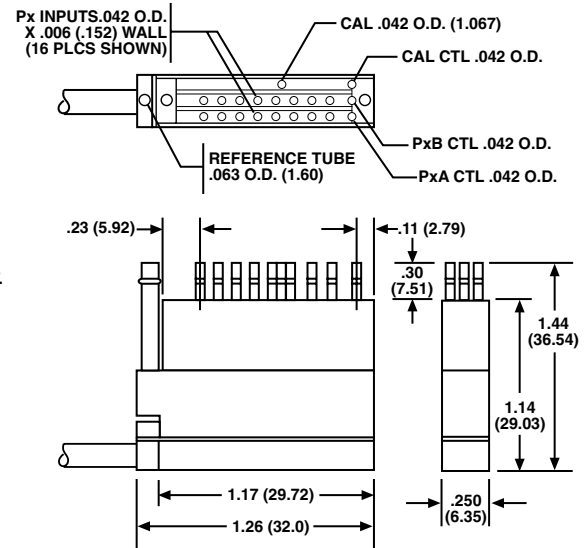
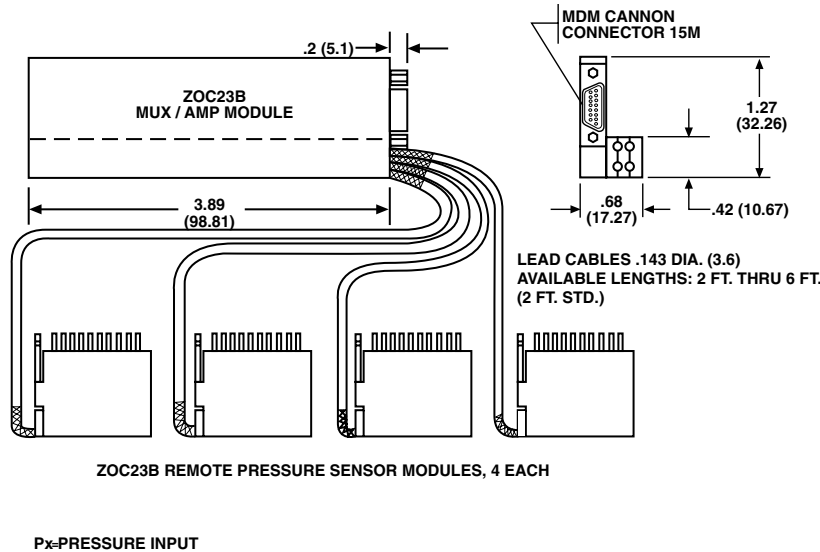


¹ Note: Accuracies are following a calibration with Scanivalve DSM3400 or RAD3200 data systems.

† 10 inch H₂O = 25.4 cm H₂O = .36127 psi

‡ 20 inch H₂O = 50.8 cm H₂O = .72254 psi

Dimensions Inches (mm)



Scanivalve Headquarters
 1722 N. Madson Street
 Liberty Lake, WA 99019
 Tel: 509-891-9970
 800-935-5151
 Fax: 509-891-9481
 e-mail: scanco@scanivalve.com

European Technical Office
 P.O. Box 3317
 Bath BA1 7XN, UK
 Tel: 01225-852-581
 Fax: 01225-852-561

Scanivalve Corp.
www.scanivalve.com

