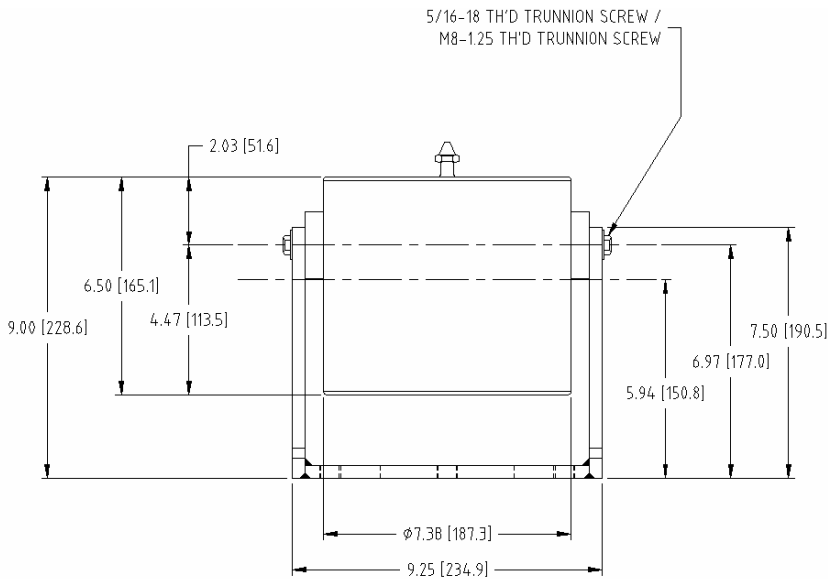




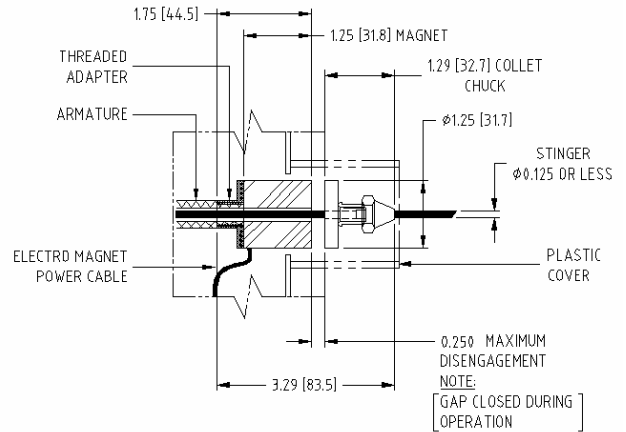
# MODAL 25 with EM Chuck

Exciter System

- ❖ Delivers 25 lbs force (110N) and 1.0" (25mm) stroke pk-pk
- ❖ Includes revolutionary EM Chuck – allowing remote on/off stinger clamping



**Modal 25 Exciter**



**Electromagnetic Chuck (EM Chuck)**

MODAL 25 EXCITER SPECS	SL500VCF AMPLIFIER SPECS
<ul style="list-style-type: none"> <li>❖ Force: 25 lbf peak (110 N) forced-air cooled; 13 lbf pk (55 N) convection</li> <li>❖ Stroke: 1" (25 mm) p-p; 1.1" (28 mm) between stops</li> <li>❖ Bandwidth: DC-4000 Hz</li> <li>❖ Moving element: 0.3 lbs (0.1 kg)</li> <li>❖ Shaker weight: 30 lbs (14 kg)</li> <li>❖ 9" H x 7½" W x 9¼" D (230 mm x 190 mm x 235 mm)</li> <li>❖ Shaker cooling: shop air, with integral air coupling; aux. fan cooling package</li> <li>❖ Clearance hole through armature for stinger</li> <li>❖ Compression and piano wire stingers, secured with collets and chuck nuts</li> <li>❖ Options: Accessory Kit &amp; Cooling Unit</li> <li>❖ CE Mark</li> </ul>	<ul style="list-style-type: none"> <li>❖ Linear amplifier design</li> <li>❖ Frequency range; DC-10,000 Hz</li> <li>❖ AC or DC coupled, separate BNCs</li> <li>❖ Current feedback and voltage feedback, external switch selectable</li> <li>❖ 25 VRMS max. output voltage</li> <li>❖ 20 ARMS max. output current</li> <li>❖ Output current measurement, BNC</li> <li>❖ Shaker overtravel shutdown</li> <li>❖ Programmable current limiting</li> <li>❖ Input power: 100, 110, 120, 200, 220, 240V; 48/62 Hz (1.5 kVA)</li> <li>❖ Sig. IN for max OUT: ±1.5 Vpk</li> <li>❖ 19" rack mount x 3½" H x 12¾" D (89 mm H x 324 mm D)</li> <li>❖ Weight: 22 lbs (10 kg)</li> <li>❖ CE Mark</li> </ul>